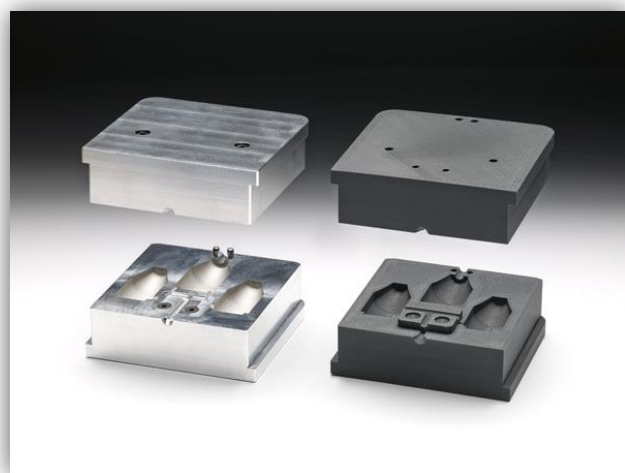


3D printing tools and prototypes with moving parts

Production of inexpensive tools has for a long time been a priority at Mikkelsen Electronics A/S. The company, which manages its own tool making, has now expanded its product range to include 3D printed tools. 3D printers can even print pieces with movable parts.

3D printed tool are quicker to produce and cost less than aluminium tools. The tools can be used to produce short series in Macromelt and the 3D printer can also print short series which are used in the continued production. That means that it's possible to in some cases completely avoid tool costs. In this way the flexibility in



the construction phase can be increased significantly.

It's also possible to produce prototypes, which are 3D printed, that give good information about how the final moulded product will look, and to produce auxiliary tools.

"Architects and designers have long used 3D printers, but ours differs when it comes to the materials we use. The materials for our 3D printer have greater variation. Some are for example more temperature resistant and are approved for use in air plane cabins, while others have other qualities", says Sales manager Christoffer Bruun.

The 3D printer can also print pieces with moving parts. One example is a D-sub contact with movable fingerscrews. With the help of a temporary material, which is removed after printing, a piece with actual moving parts is printed in one go.



It's also possible to produce prototypes, which are 3D printed, that give good information about how the final moulded product will look, and to produce auxiliary tools.

"Architects and designers have long used 3D printers, but ours differs when it comes to the materials we use. The materials for our 3D printer have greater variation.

Some are for example more temperature resistant and are approved for use in air plane cabins, while others have other qualities", says Sales manager Christoffer Bruun.

The 3D printer can also print pieces with moving parts. One example is a D-sub contact with movable fingerscrews. With the help of a temporary material, which is removed after printing, a piece with actual moving parts is printed in one go.



Mikkelsen Electronics A/S – a partner in progress

Mikkelsen Electronics A/S was founded in 1971 and is a 100% Danish owned company. Offering components as well as customer specific production, Mikkelsen Electronics now has at its disposal a staff of an outstanding skill level, who can enter into development work together with the customer. Especially in cable assembly and Macromelt moulding and encapsulation, Mikkelsen Electronics is at the cutting edge.

More questions?

Questions can be put to Sales manager Christoffer Bruun, Mikkelsen Electronics A/S on 44 34 03 04 or by writing to cb@mi-ec.com.